

# Lightning

A highly portable and cost effective tension banner stand that is lightweight, very stable and simple to use.



## features & benefits

- Available in 3 widths: 400, 800 or 1000mm (400mm width also available in 2 heights)
- Quick to assemble and easy to use
- Lightweight aluminium components
- Snap frame rails enable easy graphic changes
- Bungee pole provides consistent graphic height
- Includes carry bag
- Available in anodised silver

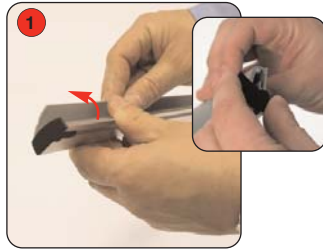


hardware specifications	graphic specifications	additional info
<p>Hardware Dimensions (mm) 2070 (h) x 805 (w) x 510 (d) approx (based upon 800mm wide unit)</p> <p>Weight: 2.75kg approx including carry bag (based upon 800mm wide unit)</p>	<p>Visible Graphic Dimensions (mm): 1985 (h) x 400 - 1000 (w) approx (based upon 2000mm high unit)</p> <p>Actual Graphic Dimensions (mm): 2000 (h) x 400 - 1000 (w) approx (based upon 2000mm high unit)</p> <hr/> <p>Visible Graphic Dimensions (mm): 1485 (h) x 400 (w) approx (based upon 1500mm high unit)</p> <p>Actual Graphic Dimensions (mm): 1500 (h) x 400 (w) approx (based upon 1500mm high unit)</p>	<p>Included in kit: Carry bag, top rail, bottom rail / stabilising foot and bungee pole</p> <p>Availability: Anodised silver</p> <p>Graphic substrate: Recommended material thickness between 225 - 300 microns</p>

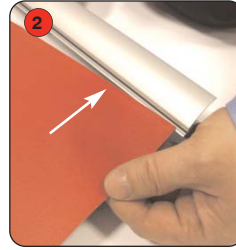
# Assembly Instructions



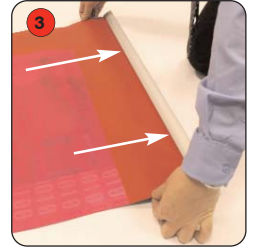
Kit includes: Top rail, Bottom rail /stabilising foot , Bungee pole and carry bag (not shown)



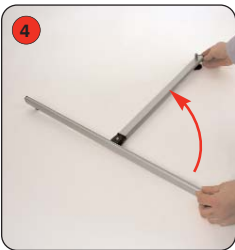
1 Open up the hinged edge on the top rail and twist the end cap to open the rail and insert the graphic.



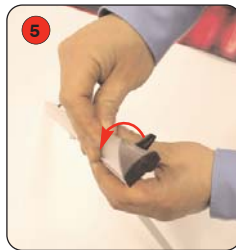
2 Slide the graphic between the hinged edge and the rail through the narrow opening. Snap shut to secure.



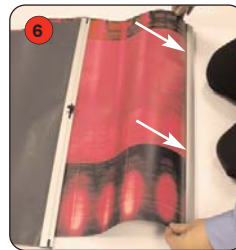
3 Ensure the graphic is pushed securely in all the way along the rail.



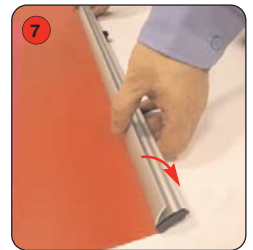
4 Open up the stabilising foot on the bottom rail.



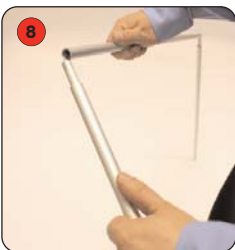
5 Open up the hinged edge on the bottom rail and twist the end cap to open the rail and insert the graphic.



6 Insert the bottom of the graphic into the bottom rail, sliding it through the narrow opening.



7 When the graphic is inserted, snap shut the hinged edge to secure the fit.



8 Open up the bungee pole and connect the 3 parts together.



9 Slot bottom of the bungee pole onto the foot.



10 Finally, bend the bungee pole forward slightly and fit to the top rail.

